

Z-110 k

Closing Machine



OFFICIAL REPRESENTATIVE:



PLASTRADE Packaging Kft.
H-1025 Budapest, Szépvölgyi út 52.
HUNGARY
☎ +36 1 886 9225
☎ +36 1 886 9226
✉ plastrade@plastrade.hu
🌐 www.plastrade.hu

Footprint
2500 x 1500 mm

Output
2700 units/h
4800 units/h for a double-step machine

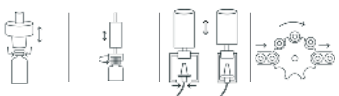
Configuration
Automatic container and closure infeed
Pre- and post-closing station
In process closure control
Non-conformity exit
Optional: induction sealing head

Products
Liquids, semi-solids (e.g. gel, cream, balm),
Solids (e.g. tablets, globules, powder)

Containers / closures
Bottles (plastic / aluminium), jars
All common screw-on and press-on closures
Optional: dispenser closures

Technical Data
GMP Design
3 x 400 VAC, N, PE, 25 AT
> 6 bar air
600 kg
SPS / HMI Siemens (Rockwell optional)
Pneumatics (SMC / Festo)

Format range
Diameter closures min - max: 30 - 100 mm
Container height max: 200 mm
Oversizes: possible (special versions)



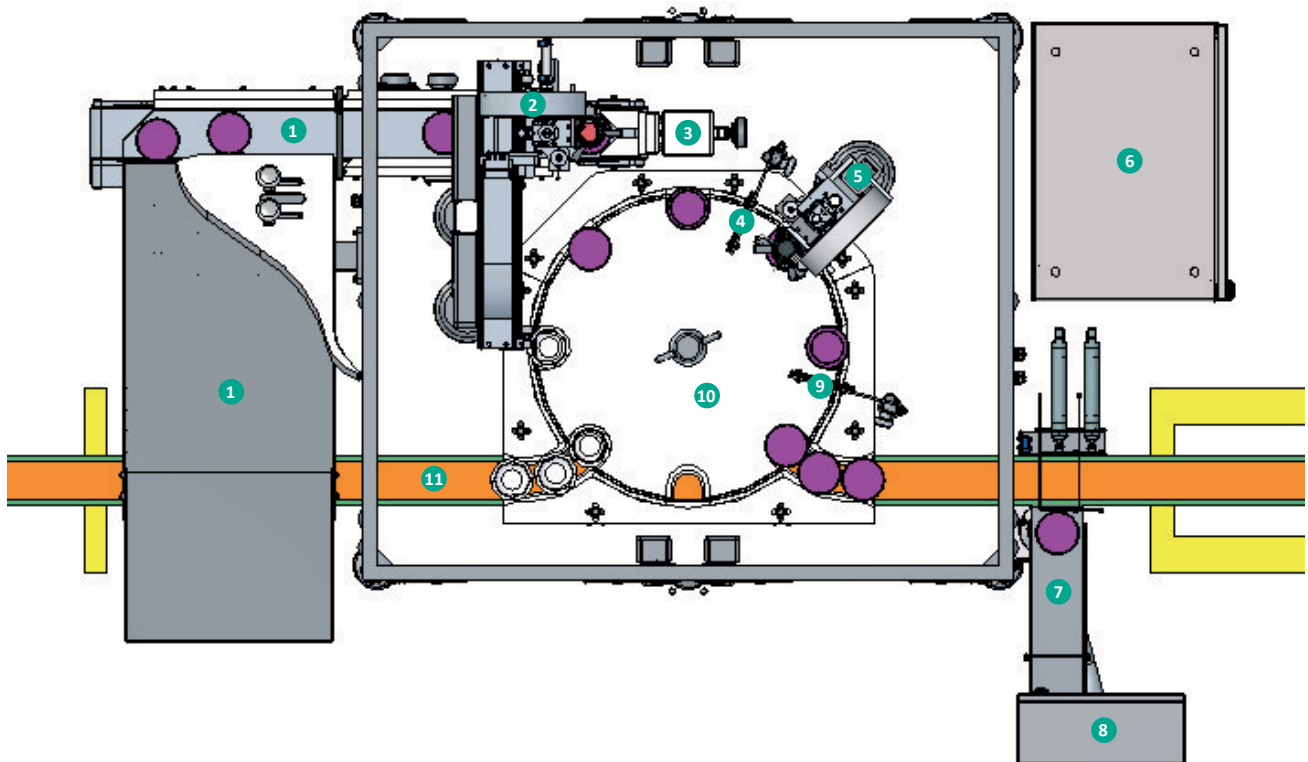
Features

- Closure infeed by means of inclined table
 - Optional alternatives: vibrating bowl, belt conveyor (for caps and dispenser closures), turntable
- Servomotoric pre- and post-screwing axis with snap-on function, 3-jaw gripper and vacuum based closure holding, suitable for a variety of closures
- Vacuum based container holding instead of clamping (no scratching)
- In process control: torque, rotation angle and position control by the screwing axes, cross control with sensors: no closure in place or closure too high / inclined with automatic ejection of non-conform containers
- Easy format change without tools: Gripper jaws clicked in, lateral guidance of closure conveyor and pick nest can be adapted by means of setting knobs with digital counters

Customer benefits

- Fully automatic process run in compact monobloc design
- Easy to clean
- Modular closure infeed options dependant on the closure type
- Snap-on and screw-on closures on the same machine
- Vacuum holding of containers and closures, suitable for sensitive products (no scratching)
- Pre- and postscrewing unit for an increased and optimal output
- Tool-free format part change according to the poka yoke-principle (Japanese, engl. «avoid unfortunate errors»)
- Format parts are avoided wherever possible
- All electric parameters are saved within recipes, all mechanical setting values are reproducible
- Expandable system

PROCESS (CONFIGURATION EXAMPLE)



- | | | | |
|---|--|----|----------------------------|
| 1 | Closure infeed (inclined table and conveyor) | 7 | Non-conformity exit |
| 2 | Prescrewing unit | 8 | Panel / HMI |
| 3 | Pickstation | 9 | Closure control 2 (height) |
| 4 | Closure control 1 (planeness) | 10 | Starwheel |
| 5 | Postscrewing unit | 11 | Container conveyor |
| 6 | Control cabinet with main switch | | |